



Spotter X10

User manual

Article: SP-X10

Table of contents

Table of contents.....	2
1. Welcome to Spotter!.....	4
2. Contents of the package.....	4
3. Explanation of buttons.....	4
4. How Spotter works.....	5
4.1. 2G and 4G data network.....	5
5. Activation.....	5
5.1. Charging.....	5
5.2. Turn on and off.....	5
5.3. Create an account.....	6
5.4. Link Spotter code.....	6
5.5. Choose credit.....	6
5.6. Connecting Spotter.....	6
5.7. Ready for use.....	6
5.8. Download the app.....	7
6. Features.....	7
6.1. Automatic Location Display.....	7

6.2. SOS alarm7

6.3. Starting phone call.....7

6.4. Setting a safety zone8

6.5. Messages/notifications8

6.6. Low battery8

6.7. Abroad8

7. Explanation of LED lights9

8. Top up credit10

9. Telephone number for missing persons.....10

11. Hardware specifications11

12. Safety Warnings.....12

 12.1. External infrastructures.....12

 12.2. Battery12

 12.3. Buttons12

 12.4. Waterproof.....12



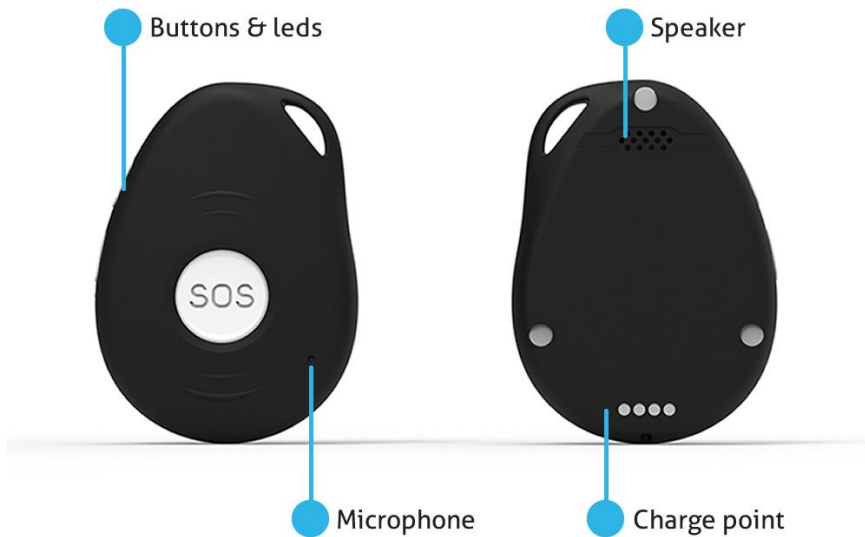
1. Welcome to Spotter!

Discover the ultimate peace of mind with this advanced GPS tracker, which supports both 2G and 4G. With the free Spotter app for iOS and Android you always have access to location data. Protect what is dear to you, be it loved ones or precious possessions. Enjoy wide coverage thanks to 2G. While 4G allows for fast location updates when available. This versatile 4G tracker automatically switches between networks for a seamless tracking experience. Meet the Spotter X10.

2. Contents of the package

Spotter X10 GPS Tracker, USB cable, Spotter code, activation manual.

3. Explanation of buttons



4. How Spotter works

The Spotter X10 determines the current location by means of the Global Positioning System (GPS). The highest GPS class is used, which ensures that locations are very accurate. These locations are then sent to your online account where you view and manage all data.

4.1. 2G and 4G data network

The Spotter X10 is a reliable GPS tracker that supports both 2G and 4G. Enjoy wide coverage thanks to 2G. While 4G allows for fast location updates when available. This versatile GPS tracker automatically switches between networks for a seamless tracking experience.

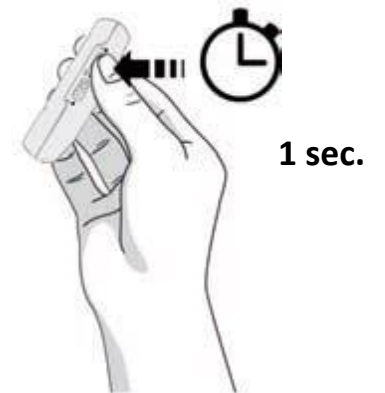
5. Activation

5.1. Charging

Before using the Spotter X10, fully charge the battery in 2 to 3 hours. Use the supplied USB cable for this. The magnetic charging design makes charging very easy. Connect the magnet and the Spotter X10 charges immediately. After connecting, a short vibration follows. This way you know that the cable is properly connected. You can also easily charge the Spotter X10 using the [Spotter Dock](#) (optional).

5.2. Turn on and off

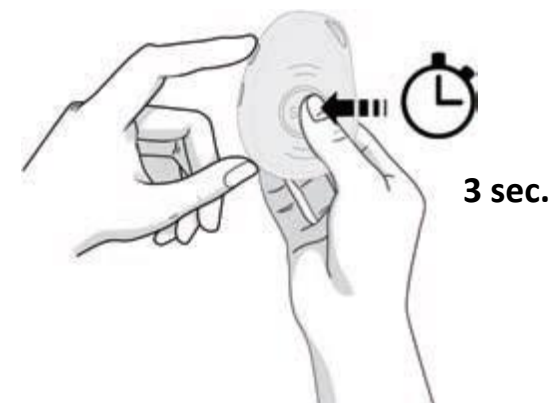
The Spotter X10 turns on automatically while charging. The LED lights on the left side flash briefly and a short vibration follows. If you want to switch on the Spotter X10 without charging it, briefly press the top gray button on the left side of the Spotter X10. The LED lights will now flash quickly. To determine the location, activate the Spotter X10 outside or near the window for a good GPS range.



To switch off the Spotter X10, press the SOS button on the front for 3 seconds at the same time as the upper gray button on the left side. The LED lights go out and the Spotter is now switched off.

5.3. Create an account

The Spotter X10 is linked to an online account where you view and manage all data. To create an account, go to my.spottergps.com or download the Spotter app in the Playstore (Android) or Appstore (iOS). You will see a login screen with the option to create a new account.



5.4. Link Spotter code

Now log in to your online account, after which a screen will appear asking you to enter your Spotter code. Here you enter the Spotter code that is on the card in the packaging. This is a unique code that belongs to the Spotter X10 in question. Keep these well too. The activation wizard then starts, which guides you through a number of steps.

5.5. Choose credit

You are not tied to contracts or subscription costs. The Spotter X10 GPS tracker works on a prepaid basis. This means that you upgrade the Spotter X10 when you want to use it. If you do not use the GPS tracker, you will not top up. Affordable and Flexible. You can easily top up the Spotter X10 via your online account. You can choose from 3, 6 or 12 months credit.

5.6. Connecting Spotter

Then take the Spotter X10 outside for at least 15 minutes so that a connection can be made to the GPS and GPRS network (satellites and mobile network).

5.7. Ready for use

The first location has now arrived and the Spotter X10 is ready for use!

5.8. Download the app

You can also view data on the go via the Spotter app for Smartphones and Tablets. The Spotter app is suitable for iOS and Android, which you can download in the Appstore (iOS) and Playstore (Android).

6. Features

The Spotter X10 provides you with the following functionalities.

6.1. Automatic Location Display

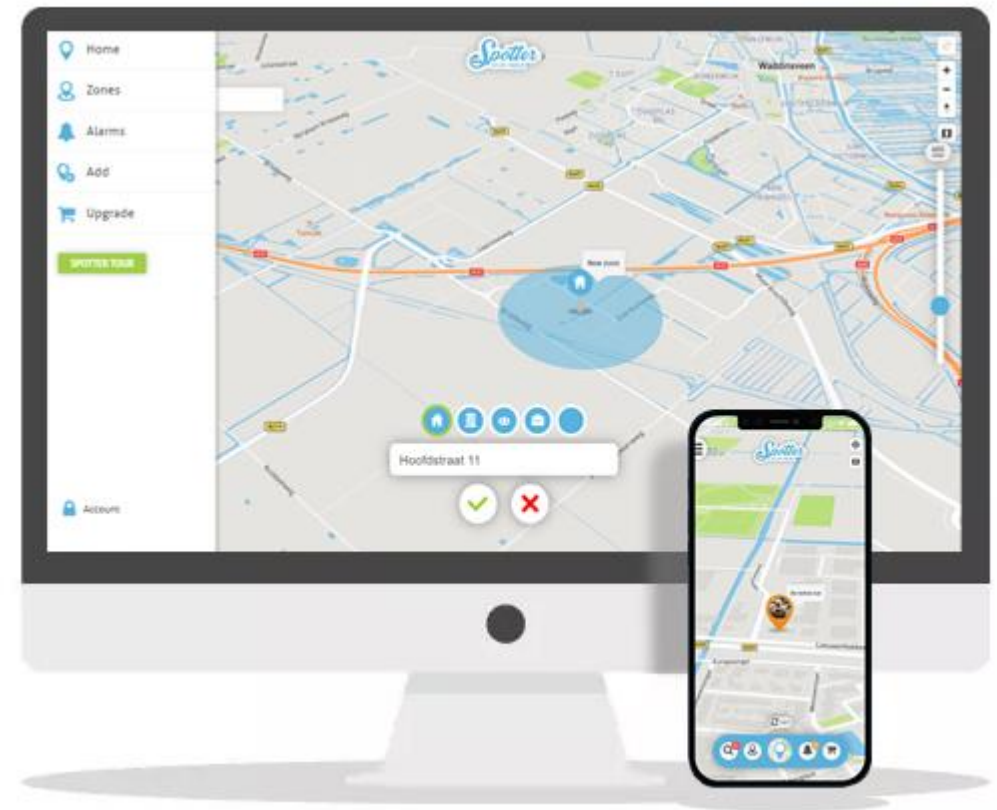
The Spotter X10 is equipped with a motion sensor that recognizes the difference between motion and standstill. When there is movement, a location is automatically sent every 60 seconds, which you can immediately view online on your account or via the Spotter app. When the Spotter X10 is not moving, the location is sent every 30 minutes. You can look back at all locations for 24 hours, after which the data will be deleted.

6.2. SOS alarm

Press the SOS button on the front of the Spotter X10 for 3 seconds. This will now vibrate for 35 seconds and an SOS message will immediately be sent to the linked user(s) together with the location.

6.3. Starting phone call

You can also call the Spotter X10, for example in the event that a person is in need and you would like to have contact. You log in to the Spotter app and select the Spotter X10 on the map. A menu opens and here you click on the phone icon to call. An audible signal will now sound for 10 seconds on the Spotter X10, after which it will automatically record. To pick up or end the phone call, click the SOS button on the front.



6.4. Setting a safety zone

Log in to your online account and set zones within which the Spotter X10 must remain. You draw a circle over an area and use it to define the boundaries. The moment a location arrives outside a zone, you will be notified immediately. To make the zones larger or smaller, click on the zone icon that you have placed in the map. You then click on edit in the menu that has appeared. Now you can use the arrows to make the circle bigger or smaller. Note: to set the safety zone, the Spotter X10 must have good GPS range (blue LED light flashes quickly, see chapter 7).

You can also set a location lock at the location where the Spotter X10 is at that moment. You will receive a notification when entering and leaving this area. If you are logged in, click on the relevant Spotter on the map and you will see the location lock function here.

6.5. Messages/notifications

You will receive all messages sent from the Spotter X10, such as locations and notifications, on the online account, by e-mail and via a push message from the Spotter app.

6.6. Low battery


If the battery voltage is less than 15%, you will be notified so that you can charge the Spotter X10 in time.

6.7. Abroad


You can use the Spotter X10 throughout Europe. [See here which countries these are.](#)

7. Explanation of LED lights

There are 3 LED lights on the left side of the Spotter X10.

 Green light – mobile network

Type of light	Means
Green light flashes quickly 1 time every 3 seconds.	The GPS tracker has good coverage with the mobile network.
Green light flashes quickly twice in succession every 3 seconds.	The GPS tracker is registered on the mobile network.

 Blue light – GPS connection

Type of light	Means
Blue light flashes quickly 1 time every 3 seconds.	The GPS tracker has no location fix.
Blue light flashes quickly 2 times in succession every 3 seconds	The GPS tracker has a location fix and can determine a location.
Blue light is off	The GPS tracker has no location fix.

 Red light– Battery

Type of light	Means
Red light is on continuously	The GPS tracker is fully charged.
Red light flashes in quick succession	The battery of the GPS tracker is below 15%.
Red light is off or flashes slowly	The GPS tracker is being charged.

8. Top up credit

For new credit, go to your online account and select top up, where you can choose from prepaid credit for 3, 6 or 12 months. You do not have to top up the Spotter X10 immediately when the credit has been used up. For example, you can choose not to use the Spotter X10 for 3 months and then activate new credit.

9. Telephone number for missing persons

Children - call 116000

The 116000 Helpline is a European emergency number of the European Union for reporting missing children. The number directly connects parents with specialist staff who can provide further assistance. More information is available at <http://www.116000.nl/>.

Adults - call the police

In case of impending danger: 112 No impending danger: 0900 8844

10. Warranty

The warranty period is 24 months on the hardware, which commences from the moment Spotter is delivered. More information about the warranty provisions can be found in our Terms and Conditions under Articles 15 and 16.

10.1. Support

[Our support department](#) is available on working days from 09:00 – 17:00 uur.

11. Hardware specifications

Inhoud	Specificaties
Dimensions	61mm x 44mm x 16mm
Weight	40 grams
GSM frequency	1575.42MHz
GPS chip	U-blox M8130 (AGPS support)
Flash memory	1MB
Antenna	Built-in ceramic antenna
Time to first fix	Cold start 26 sec. Warm start 2 sec. Hot start 1 sec.
Charging voltage	5V DC
Battery	Rechargeable, 3.7V, 800mAh (Li-Polymer)
Store temperature	-40°C to +60°C
Operating temperature	-20°C to +60°C
Water resistance	IP67 (immersion-tight)
MCU	Nordic NRF52840
Sensor	Motion & vibration sensor
Connectors	4 Pin magnet for charging

12. Safety Warnings

12.1. External infrastructures

Operation of the product partly depends on infrastructures such as GPS, GSM and Internet connections, which fall beyond the control of Spotter. Spotter cannot be held responsible for proper and uninterrupted operation of these infrastructures and the peripherals used or for failure or unavailability of or interruptions to these systems, nor for any consequences thereof.

12.2. Battery

The lithium battery in Spotter must not be removed. Not to be used in a humid, wet and/or corrosive environment. Spotter must not be placed, stored or left in or near a source of heat, in a high temperature location, in strong direct sunlight, in a microwave oven or in a pressurised container and Spotter must not be exposed to temperatures above 60o C (140o F). If you do not comply with these requirements acid could leak from the battery or the battery may become hot, explode or ignite and cause injury and/or damage. Do not open, disassemble or puncture the battery.

12.3. Buttons

The Spotter is fitted with buttons that can be pressed. Spotter may become damaged if excessive force is used to press these buttons.

12.4. Waterproof

The Spotter X10 is waterproof (IP67). The IP67 rating for GPS trackers stands for excellent dust and water resistance. With '6' the device is protected against dust, while '7' indicates that it is water resistant up to 1 meter deep. Therefore, make sure that the Spotter X10 does not come into contact with too much water. We recommend not showering or swimming with the Spotter X10.



WEEE Directive

This symbol on the packaging indicates that this product is not to be treated as household waste. In accordance with EU Directive 2002/96/EC for Waste Electrical and Electronic Equipment (WEEE), this electrical product must not be disposed of as unsorted municipal waste. To dispose of this product, submit it to your local municipal collection point for recycling.



CE mark

This device complies with the requirements of the CE Mark for use in a residential, commercial or light industrial environment or in a vehicle

This user manual

We have taken great care in compiling this guide. Due to constant product development it may occur that the information contained herein is not entirely up-to-date. Spotter BV cannot be held liable for technical or editorial errors contained in this document, nor for incidental or consequential damage resulting from the performance or use of this material.